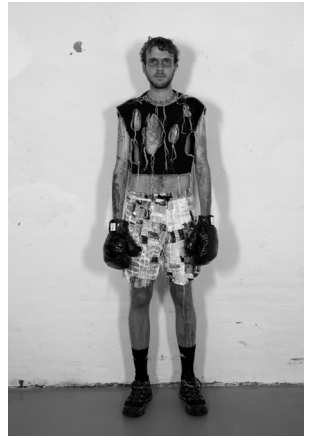


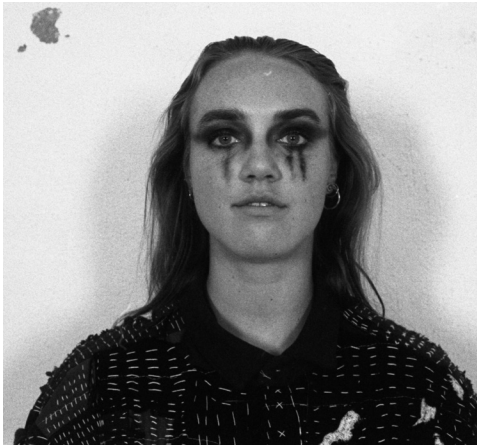
A black and white, high-contrast portrait of a man's face. He has a full beard and mustache. White paint is applied to his face, forming a thick, stylized outline around his eyes and nose. The background is a light, textured grey.

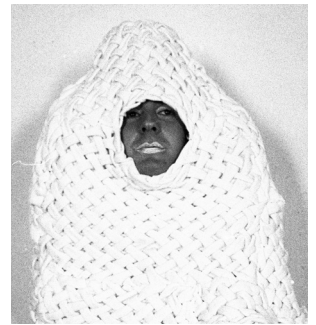
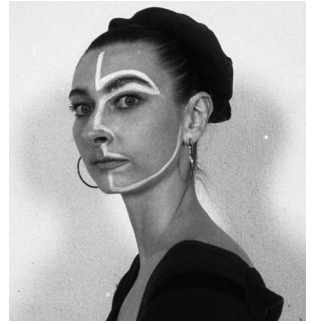
KRABBESHOLM

F/W - 2021































**COLLECTION BY KRABBESHOLM DESIGN STUDENTS.
PHOTOGRAPHY & GRAPHICS BY MALVA ASKERUP.**